

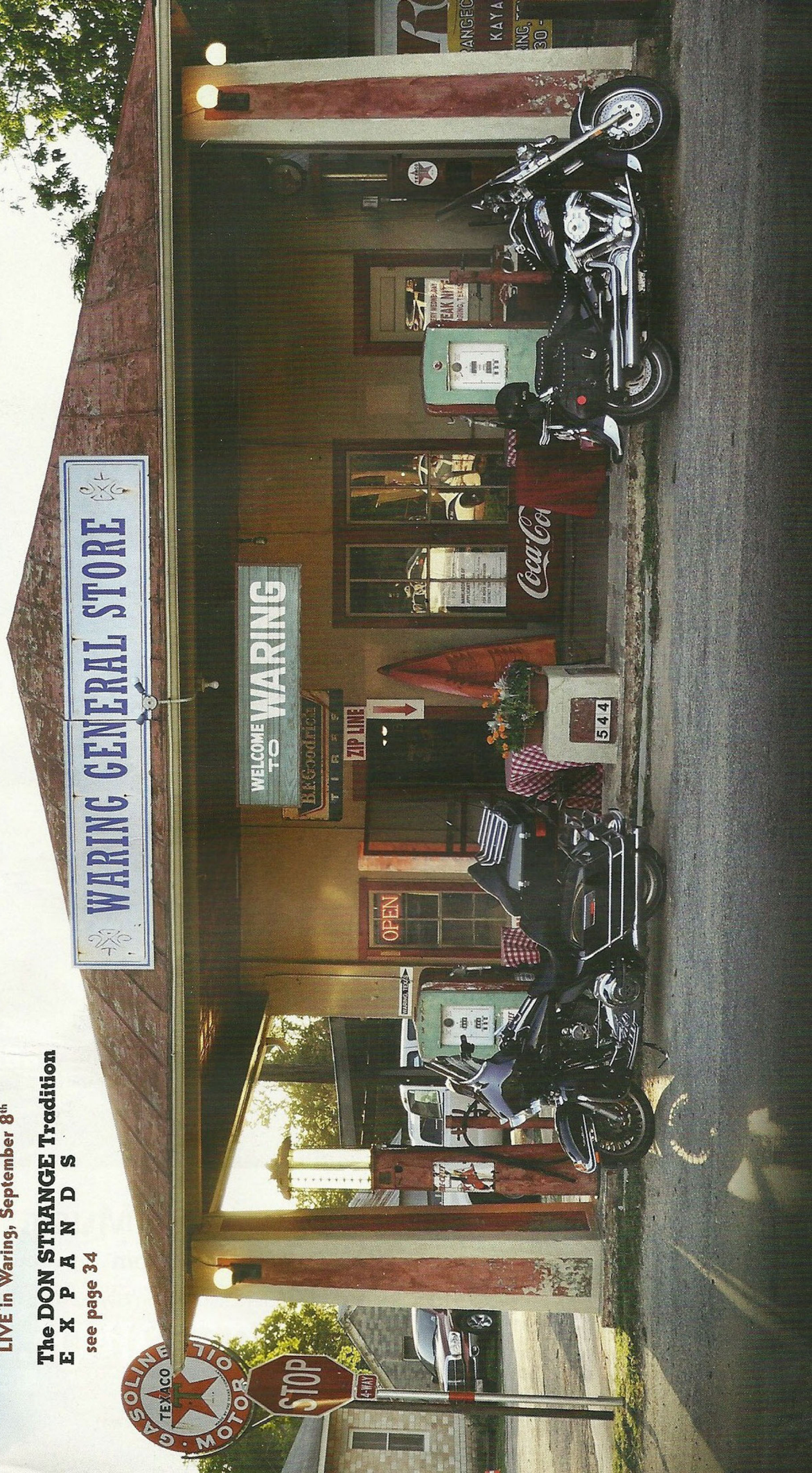
HILL COUNTRY HAPPENINGS

VOL. 7 NO. 7 SEPTEMBER 2010

HCHAPPENINGS.COM

KIMBERLY KELLY
LIVE in Waring, September 8th

The DON STRANGE Tradition
EX P A N D S
see page 34



"THE EMPTY CROSS" Is Finally Up!

Now please help us finish the entire 23 acre The Coming King Sculpture Prayer Garden, which will be free to the public, forever. Millions of dollars have already been donated and spent to build this non-denominational, Christ-honoring project. However, more funds are needed to finish the ambitious art project. If we had the money, we could complete the entire garden in about one year.

Birthing in December of 2001, the non-profit project is being built in stages, on faith in God, without debt, public tax money or professional fundraisers.

For the glory of God, the valuable land at the main entrance of Kerrville has been donated by a Christian family. Over three million dollars worth of contemporary Christian sculptures have been donated by three internationally collected Christian artists. Hundreds of thousands of dollars in labor and services have already been donated by local churches and contractors. The roads have been cut and over 3,500 genuine 1.25 ton limestone blocks have been placed. By the providence of God, the garden is located at the same latitude as Israel.

Christians across America are supporting this unique spiritual project with their treasure and their prayers. The Kerrville garden has been prayed over by Christians like Governor Mike Huckabee, Pastors Franklin Graham, Rick Warren, Dr. James Dobson, the late Dr. Bill Bright and Dr. Oral Roberts, to name just a few. GOOGLE "Kerrville Cross" and find stories running across the nation and world - on radio, TV, the internet and in magazines.

The largest Christian tour company in the world is waiting to send tours to Kerrville. God is going to bless Kerrville with this project which honors His Son.

However, we need funds to finish this ambitious world-class garden. Will you make a tax deductible donation to help us bless our community and lift up Jesus Christ at the same time? Our country needs to come back to God.

Thank you for your prayerful consideration.

TCKF Trustees

www.thecomingkingfoundation.org

The 77'7", 70 ton Cor-tin steel "Resurrection" contemporary cross sculpture was erected over Interstate 10, on July 27, 2010 as the world watched via "LIVE" streaming video.

